

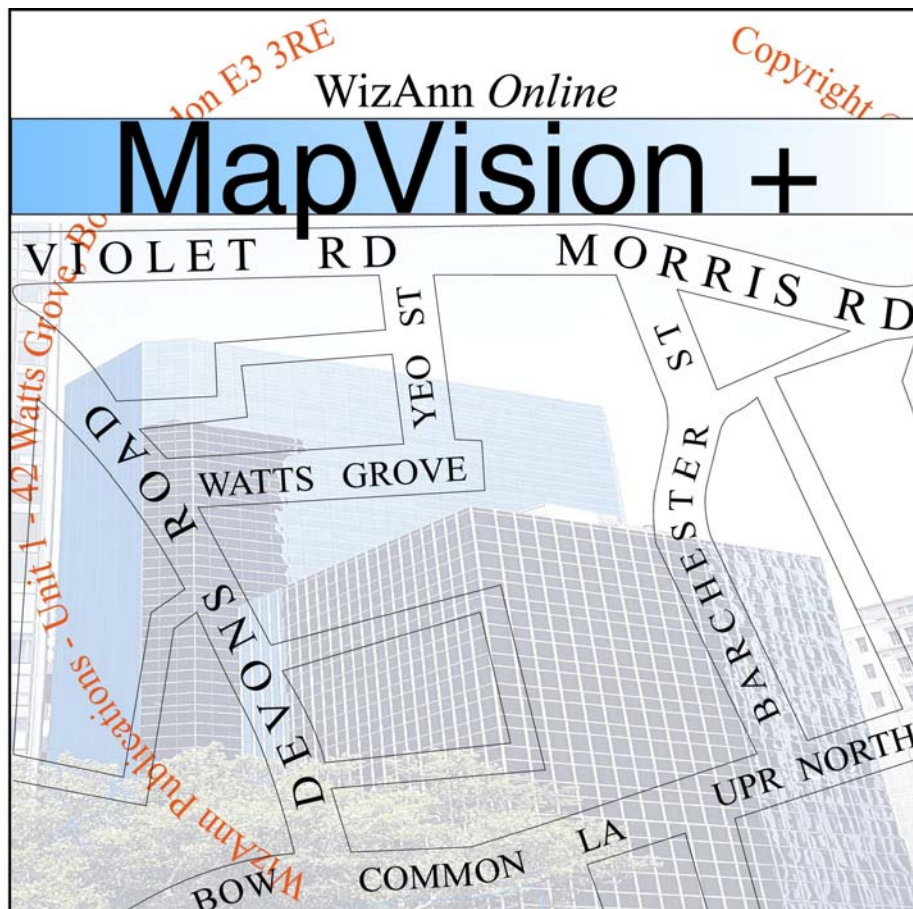
Mapvision Plus and SMArt Points

WizAnn MapVision+ Operating Manual

Welcome to MapVision+ for Windows, an innovative product from WizAnn in conjunction with SMArt Points and WizAnn *Online*.

The following manual will introduce you to the various features of MapVision+ with screen illustrations and straightforward step-by-step instructions.

The Knowledge of London Point Location Software



For Technical Support Call:

Dean Warrington – 020 7093 0909 (Monday – Friday)
Email – wizannpublicat@aol.com

Mapvision Plus and SMart Points

Index

Installation of MapVision+.....	2
Starting MapVision+	
Installation of SMart Point Database	3
Improving the Viewing Environment	6
Database Window and Layers	7
Uninstalling	9
Moving MapVision	9
How to use the most Common Functions.....	9
Toolbar	9
Zoom in – Zoom out	10
Add or Remove Detail	10
Database on/off	10
Search for a Point.....	10
Go to Function	
Adding Your Own Points to the Map.....	11
Changing the Font and tag Display.....	12
Save Workspace	13
How to Save Your Workspace	
Adding and editing Traffic Restrictions.....	14
Creating a Blank Practise Maps for the Written Test.....	16
Zooming in, out	18
Panning	19
Working with Multiple Windows	20
Tiling and Cascading	21
Closing a Window, Multiple Windows and Overview Window	22
Naming Maps and The Active Window	23
Map Toolbar – Overview.....	24
Keyboard Shortcuts.....	25

Mapvision Plus and SMArt Points

IMPORTANT

About Mapvision +

MapVision + was Originally Produced by Nextbase Ltd in 1987 – 1994 The map data used is mapping data from 1994.

MapVision + is now currently owned by
Microsoft / WizAnn Publications.

The function of this software is to store and locate point information. (Points = any building or object of interest that an examiner deems viable to be asked during oral appearances) and for this reason it is not deemed an important comprise to continue using the 1994 map data.

Points are continuously added to the software each month. We do not remove old points, as this information is also relevant throughout the Knowledge. We do sometimes state within the points field information that it has moved or closed.

Some major road changes have occurred since 1994 mainly around the Greenwich peninsular that are not shown on this map.

We are unable to use more recent mapping than this due to programming complexities that at present cannot be overcome.

Mapvision Plus and SMArt Points

Installation

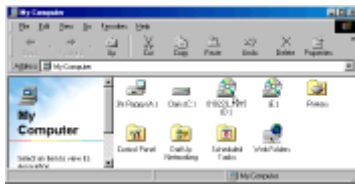
To Install:

Turn on your computer and start Microsoft Windows
Insert the CD into the compact disc drive



Double Click on “My Computer”

This is an icon usually in the top left hand corner of your computers main screen



This will bring up the “My Computer” window



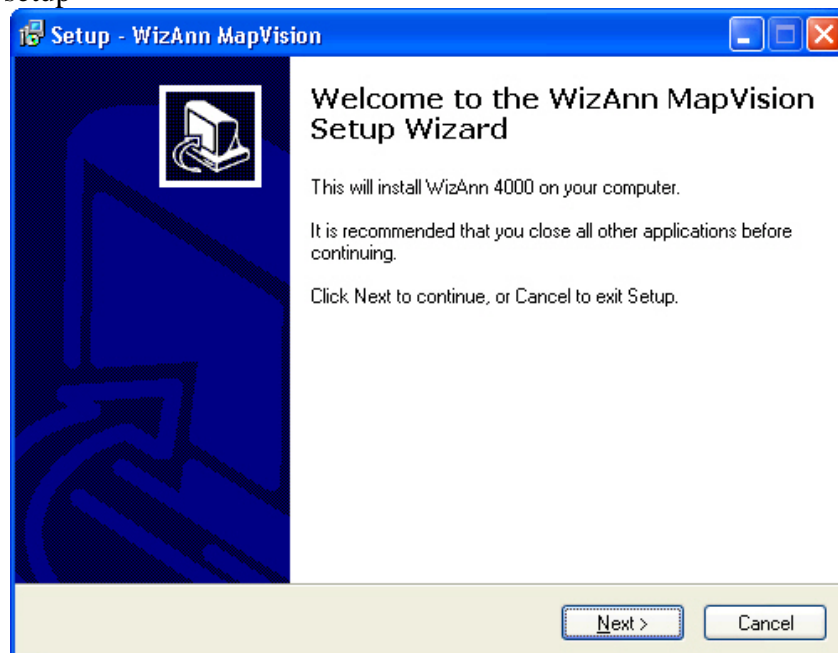
MAPVISION_PLUS

Double Click on your CD Drive Icon
(this is usually represented by the letter [D:])

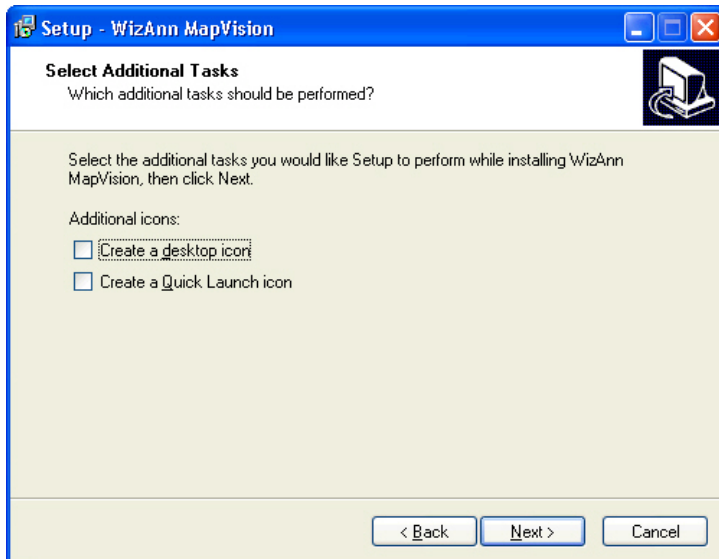
This will bring up you “CD Drive” window



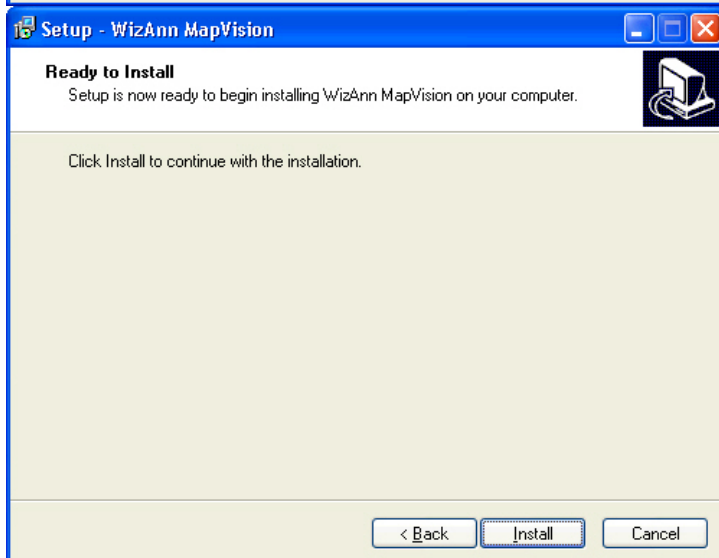
Double Click on “setup”



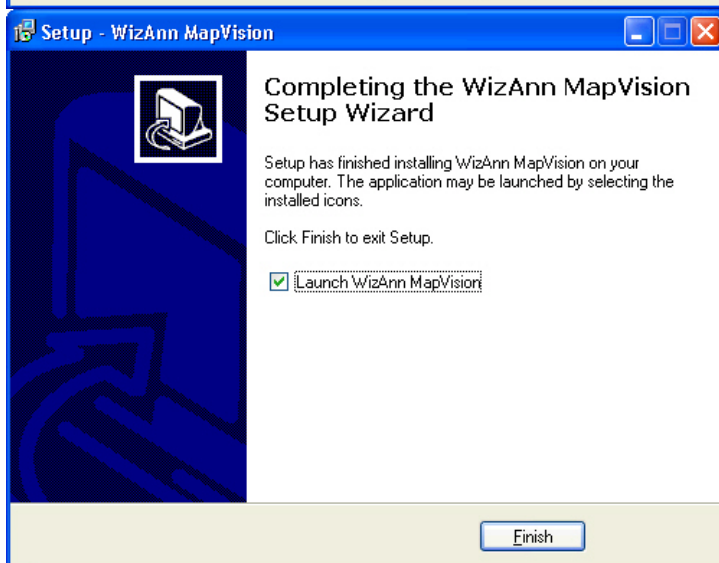
Mapvision Plus and SMart Points



Make a Selection if you wish then press "NEXT"



Click "INSTALL"



Click "FINISH"

WizAnn MapVision+ installation is complete!

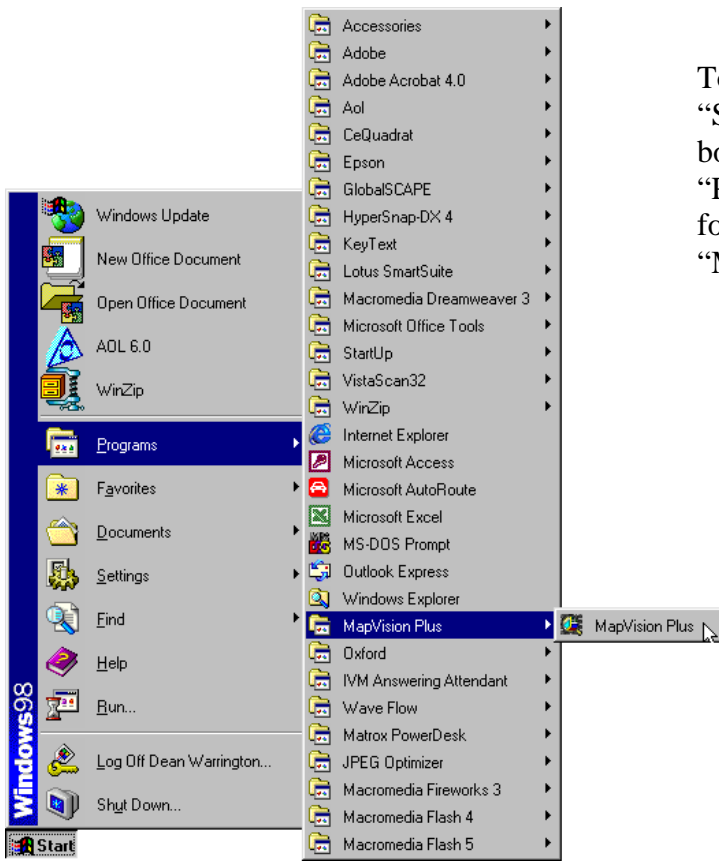
Mapvision Plus and SMArt Points

IMPORTANT!

**If you are asked to enter your username you MUST ENTER
“Cabbie”**

You are now ready to use MapVision plus

Starting MapVision



To start MapVision plus – go to your “Start” button this is often in the bottom left hand corner. Select “Programs” then the “MapVision Plus” folder and now click on the “MapVision Plus” icon.

Windows 98 and XP users may wish to drag this icon onto their desktop for faster access.

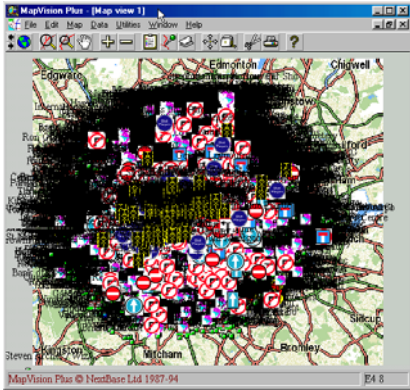
How do I drag the icon?

Hold down your mouse button over the “MapVision Plus” icon and drag to the side onto your main screen then release the mouse button.

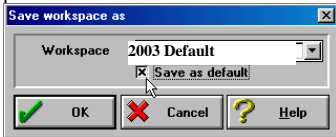
Mapvision Plus and SMArt Points

To improve the viewing environment

Once loaded your viewing area will display points automatically, you need to change this to a more viewable situation, this can be done by loading and saving a new “Workspace”



When the “Save as” window appears, make sure you put a cross in the “Save as default “ box.



Click “OK”

From now on every time you start, MapVision+ will begin with this view

Select

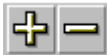
“File” “Workspace” “Load”

Then Select “2003 Default” click “OK”

You will now need to save this as your default "Workspace" Select “File” then “Workspace” then “Save as”

You may choose to save any view that suits your needs and if you select the “Default” box, this will be the View you will start with each time.

Once you have chosen and saved the 2003 Default workspace you may begin to view the points in WizAnn modules 1-3 or SMArt Points 2003 by pressing the + or – Keys on your keyboard or shortcut toolbar at the top of your screen




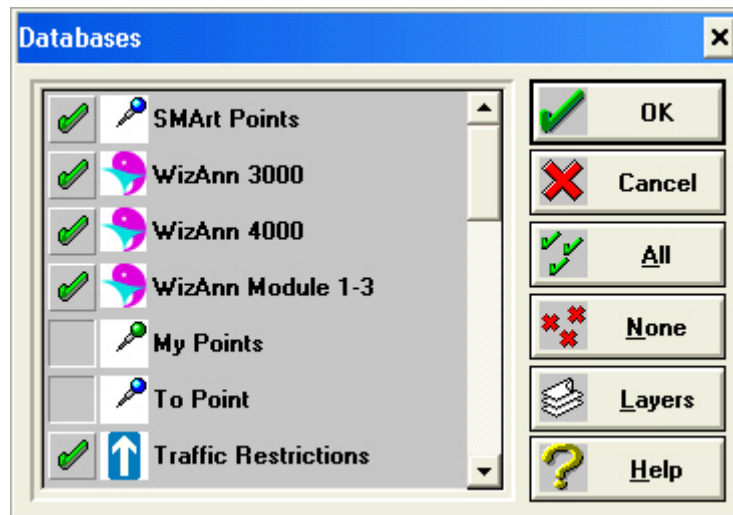
Press the minus button five times and it will remove all tag names and pins.



Mapvision Plus and SMArt Points

The Database Window and Layers

To switch your database files on or off select the green pin from the toolbar 
Select or deselect as necessary
(This will display all, none or some of the databases that you select)



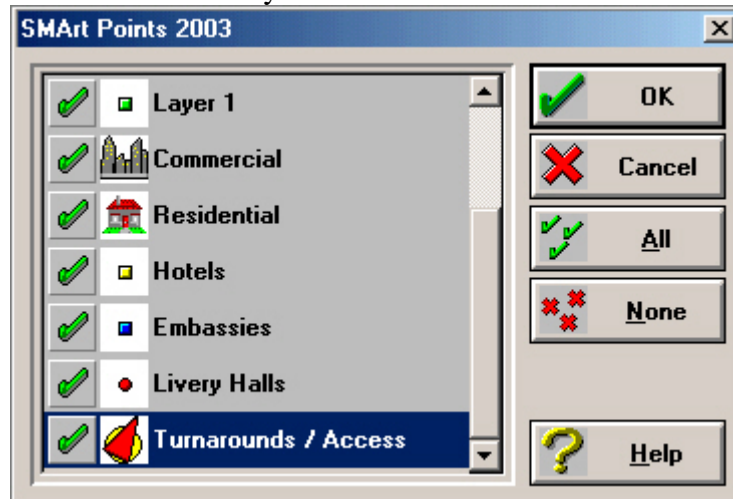
Each Database has its own layers.

These layers can be switched on or off individually to allow specialised viewing.
If you wish MapVision to display just Livery Halls then de select all other layers by removing the green tick to the left of the layer leaving a tick in Livery Halls, Show Names & Show Symbols

Mapvision Plus and SMArt Points

SMArt 2003 Layers

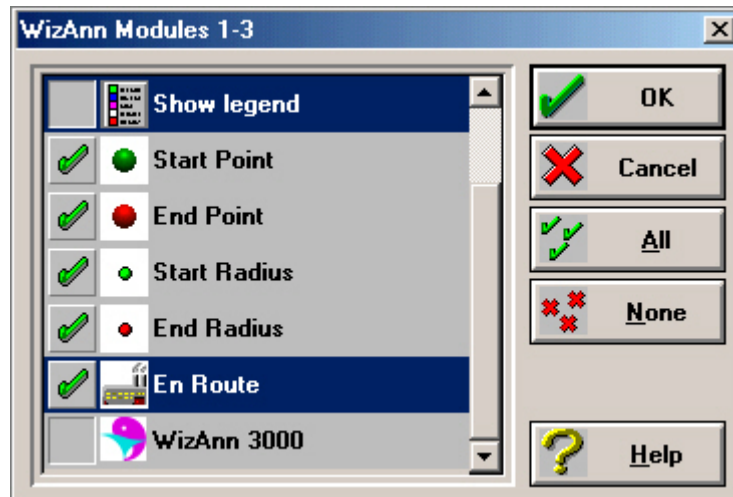
- Layer 1 = General
- Layer 2 = Commercial Buildings
- Layer 3 = Residential Buildings
- Layer 4 = Hotels
- Layer 5 = Embassies
- Layer 6 = Livery Halls
- Layer 7 = Turnarounds



These layers can be switched on or off individually to allow specialised viewing. If you wish MapVision to display just Start Points Then de select all other layers by removing the green tick to the left of the layer leaving a tick in Start Point, Show Names & Show Symbols

WizAnn Modules 1 – 3 Layers

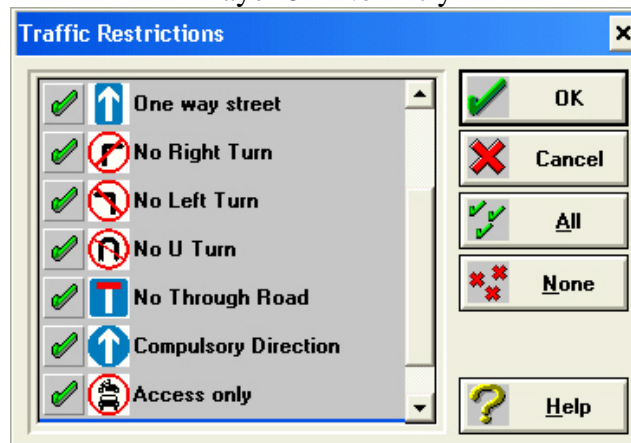
- | | |
|------------------------|--|
| Layer 1 = Start Points | 240 Start points of the new 320 Bluebook Runs |
| Layer 2 = End Points | 240 End points of the new 320 Bluebook Runs |
| Layer 3 = Start Radius | 1922 points found within the start radius of the new 320 Bluebook Runs |
| Layer 4 = End Radius | 1937 points found within the End radius of the new 320 Bluebook Runs |
| Layer 5 = En Route | 515 points found En Route of the new 320 Bluebook Runs |
| Layer 6 = General | 14289 General Points of Interest |



Mapvision Plus and SMart Points

Traffic Restriction Layers

- Layer 1 = One Way Streets
- Layer 2 = No Right Turns
- Layer 3 = No Left Turns
- Layer 4 = No U Turns
- Layer 5 = No Through Road
- Layer 6 = Compulsory Direction Arrow
- Layer 7 = Access Only
- Layer 8 = No Entry



Positive Road Signs Layers



When entering road signs enter the corresponding layer number to display the correct road sign.

Mapvision Plus and SMArt Points

Uninstalling

To uninstall MapVision Plus, proceed as follows:

1. Use File Manager to delete the contents of the directory into which you installed MapVision Plus (usually C:\Winplus) and any subdirectories off this directory (Cabbie - etc.).
2. Remove the MapVision Program Group from File Manager.
3. Delete the file NEXTBASE.INI from your Windows directory.

It really is as simple as that. Unlike many other Windows programs, MapVision Plus for Windows does not put any other files in the WINDOWS directory and it doesn't change your WIN.INI.

Moving MapVision

If you are moving MapVision Plus to a different directory you will need to update NEXTBASE.INI, changing any references to the old directory to point to the new directory.

Common Functions

How to use the most common functions!

Listed below are the most commonly used and useful functions relevant to Knowledge students using this software package.

In the top left hand corner of the main MapVision+ window you will see the toolbar.



Here are the most useful tools to use.



Zoom In – Zoom Out

This allows you to change your viewing environment by increasing or decreasing the magnification.



Add or Remove Detail

Press the minus button five times and it will remove all tag names and show only the pin.



Mapvision Plus and SMArt Points



Database on/off

Press the green pin to display all databases available to switch on or off.



The Green tick indicates that this database will be displayed on the map once you press OK.

Basic Point Search

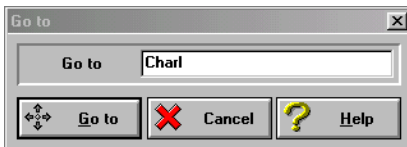


Go to Function

Press the Go to Function and the “Go to” window will appear. This will allow you to type the first few letters or whole word of a point that you may be searching for.



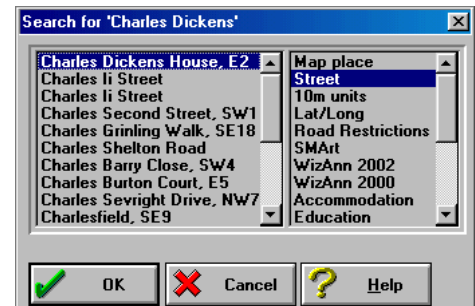
If you type only part of a word the Search will be a broad search. By default it will automatically search streets. If you wish to search for a point you will need to select Map Place



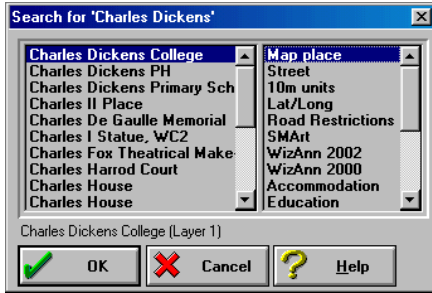
If you type a full name the search will be more accurate.



Because the default search looks for roads you will need to select Map Place for it to search for a point of interest. If you compare these tables search results you can see the difference between each selection.



Mapvision Plus and SMArt Points

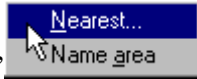


Once your search is complete and the Point you require is listed press “OK” MapVision + will now display the location of the point on the map and display it with a blue label



To obtain extra details click your right hand mouse button near to the centre of the blue label. This will

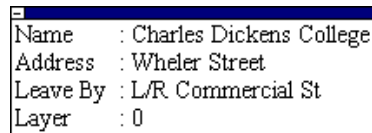
display the “Nearest” box click “Nearest”



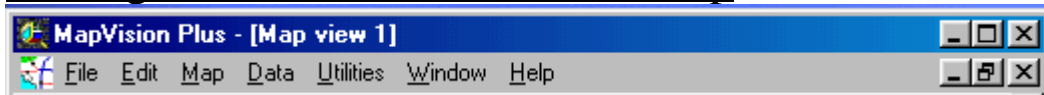
Then click “Info”



This will now display more Information about the point



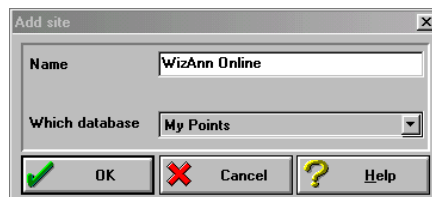
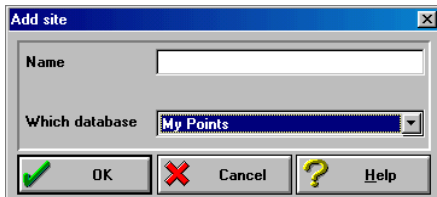
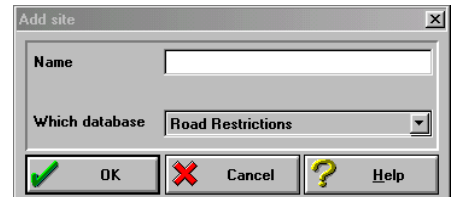
Adding Your Own Points to The Map



1. Click on “Edit”
2. Select “Add Site”
3. Place Hand Pointer on Location you wish to place your point
4. Click Left Mouse Button

The Add site window will appear.

It is important to make sure the “Which Database” Field States “My Points” So Select this mode if it was not selected automatically.



Once this is done you may type in the “Name” field the point you wish to add. Only type the point name. Not the address as this will be added later.

Once you have typed the name of the point press “OK”.

Mapvision Plus and SMArt Points

The Pin and Tag will appear on the Map in the location you specified.



Double Click on the Pin and the “Edit info” box will appear. This will allow you to add extra information such as address or access problems. Or just notes!

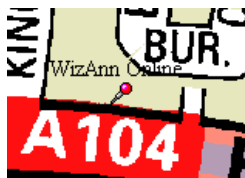
Name	WizAnn Publications
Door Number	5
Address	Portia Way
Postcode	E3 4JG
Set Down L	

Set Down R	
Access	Bow Common Lane
Leave By	Eric St
Alt Leave By	Portia Way
Comment	Hard to Find

Changing the Font and tag Display

To make your viewing environment customised to your requirements, you may choose to view your labels with

A transparent background

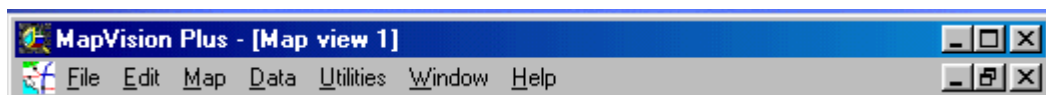


Or a white background



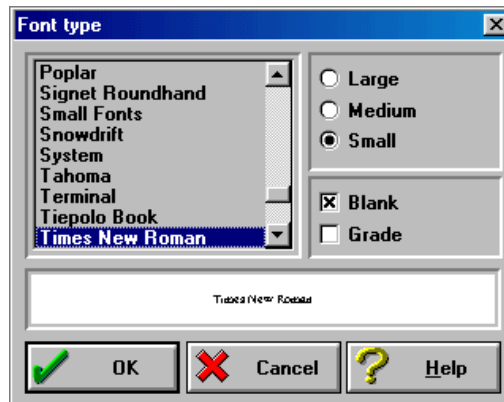
You may also change the font to one that you may find easier to read.

Select “Map” from the toolbar



- 1 Click “Map”
- 2 Select “Font”
- 3 The “Font type” Window will then be displayed

Mapvision Plus and SMArt Points

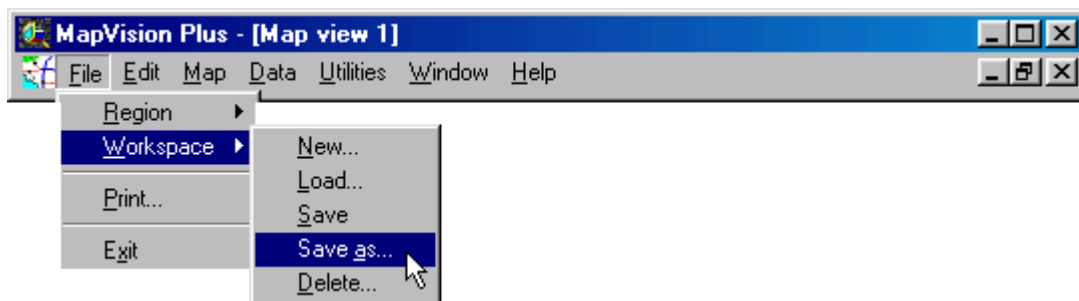


Now customise your settings to suit yourself

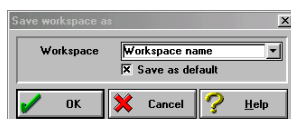
Save Workspace

When you have changed or customised your viewing area or Font Type you **MUST** always save this as a “Workspace” for the changes to be remembered.

How to save your Workspace



1. Select “File”
2. Select “Workspace”
3. Select “Save as” The “Save work space as” Window will appear



In the “Workspace” Field type the name you wish to call your Workspace. If you want MapVision+ to start with this view each time you will need to select “Save as default”.

When adding or removing points it is **NOT** necessary to save your environment as a “Workspace”.

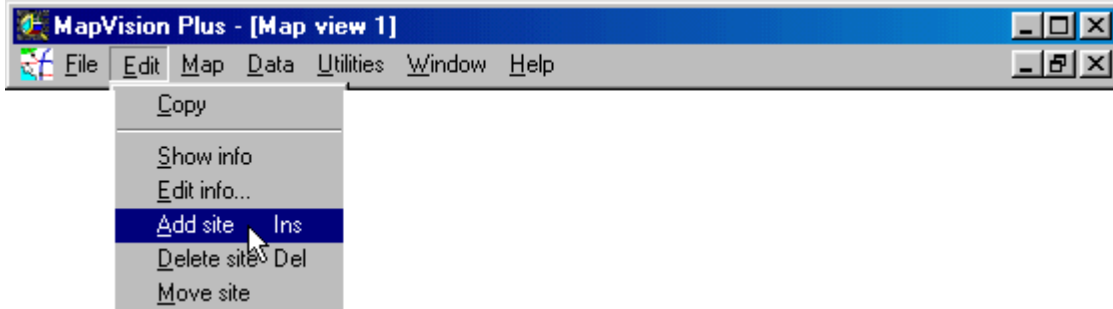
Mapvision Plus and SMArt Points

Adding and Editing Traffic Restrictions

To Add a traffic sign:

Select "Edit"

Select "Add Site"



The cursor (The White Arrow) will change into a pointing hand symbol
Place the point of the finger in the location on the map where you wish to add your road sign.


The "Add Site" window will appear



Enter the name of the road that the Traffic Restriction applies to.

Make sure you have selected the "Traffic Restriction" Database in the "Which Database" Window

Now press OK

The default Traffic sign is  (One way street). This sign will appear in the location that you have chosen. You now need to add more information and select the correct road sign.



Double Click (Using the Mouse) on the One Way arrow. This will bring up the "Edit site information" Window

The "Name" field will already display the name you had entered

Mapvision Plus and SMart Points



Edit site information

Name: Chivalry Rd

Postcode: SW11

Comment: One Way from Battersea Rise to B

Layer: 1

Extra_info:

OK Cancel Help

In the “Comment” field enter a clear text about the particular restriction – In this instances

“One Way from Battersea Rise to Bolingbroke Grove”

This now tells you Chivalry Rd is One Way and in which direction.

The “Layer” field needs to be a number between 1 & 8. These numbers represent your choice of road sign to be displayed.

Traffic Restriction Layers

- Layer 1 = One Way Streets
- Layer 2 = No Right Turns
- Layer 3 = No Left Turns
- Layer 4 = No U Turns
- Layer 5 = No Through Road
- Layer 6 = Compulsory Direction Arrow
- Layer 7 = Access Only
- Layer 8 = No Entry

When entering road signs enter the corresponding layer number to display the correct road sign.

When you have edited your road sign information press OK to return to the main screen.



Traffic Restrictions


<input checked="" type="checkbox"/>		One way street
<input checked="" type="checkbox"/>		No Right Turn
<input checked="" type="checkbox"/>		No Left Turn
<input checked="" type="checkbox"/>		No U Turn
<input checked="" type="checkbox"/>		No Through Road
<input checked="" type="checkbox"/>		Compulsory Direction
<input checked="" type="checkbox"/>		Access only

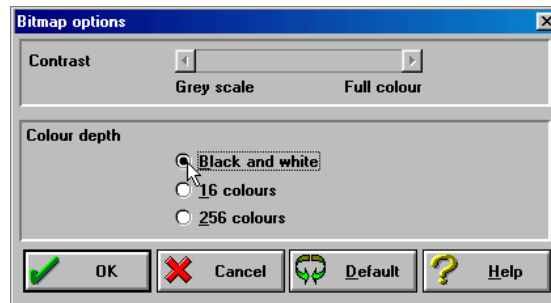
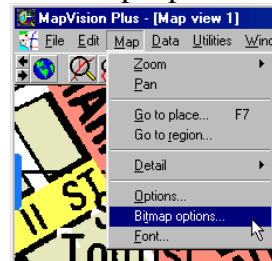
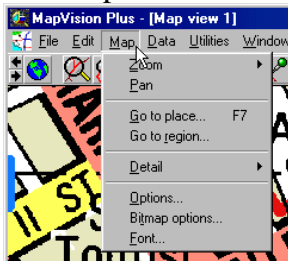
OK Cancel All None Help

Mapvision Plus and SMart Points

Creating a Blank Practise Map for the Old School Written Test

1 Make sure all databases are switched of, so that all you can see is the map area.

2 Using the Zoom  function zoom-in to the area you wish to create a map of.
1, Select “Map”
2, Select “Bitmap Options”

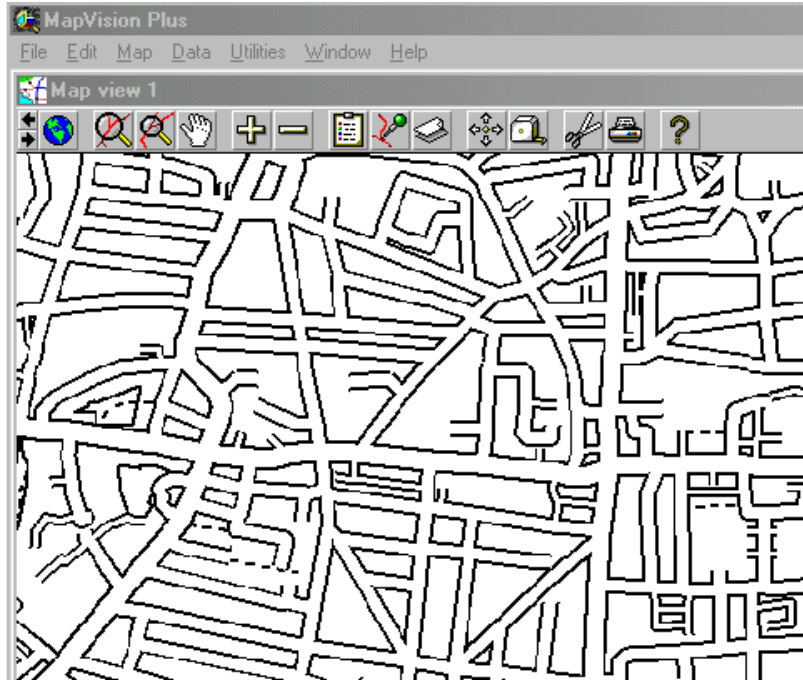


3, The “Bitmap Options” Window will appear – Select Black and White and press OK

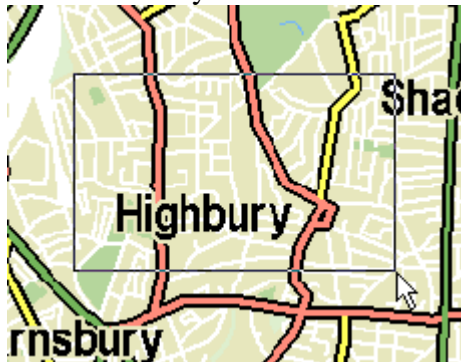


Click the “Zoom out”  button until all road names disappear

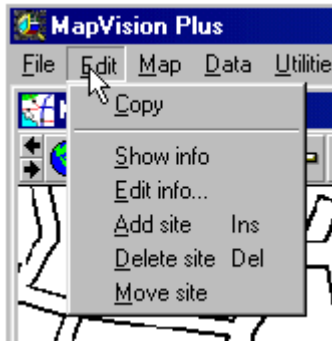
Mapvision Plus and SMArt Points



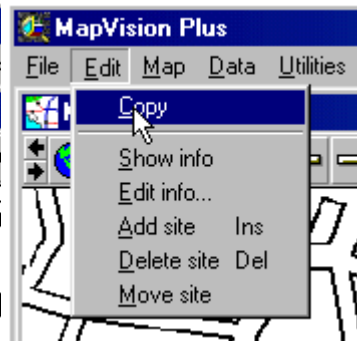
Using the mouse- drag a square over the exact area you wish to use!



Select "Edit"



Select "Copy"



The area you have chosen has now been copied into your computers memory and can now be pasted into third party software such as Microsoft Word, ready to be rescaled and printed.

Mapvision Plus and SMArt Points

Zooming in, out

Zooming

When examining a map, you may want to see a particular area in more detail. This is called zooming in, and you can do this in several ways.

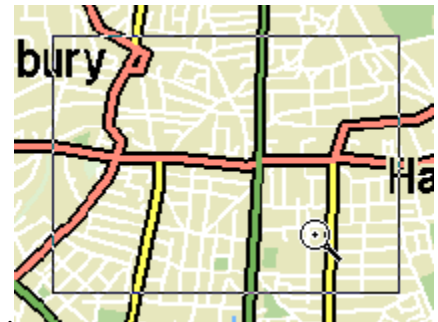
Before you start, you will need to select the area of map you want to look at. To do this, move the mouse arrow to a position above and to the left of the area you need.




Now, hold down the left mouse button and drag the arrow down and to the right. A box will appear as the arrow moves.

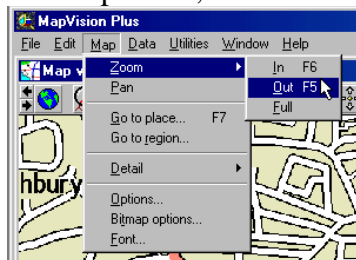
When this box is positioned correctly over the area you wish to see in more detail, release the mouse button.


If you move the mouse pointer inside this area you will see that it changes to a magnifying glass pointer



Simply click with the left mouse button to zoom in on this area.

Alternatively, you can click on the large magnifying glass icon  on the toolbar, or select the command Zoom in from the Map menu,

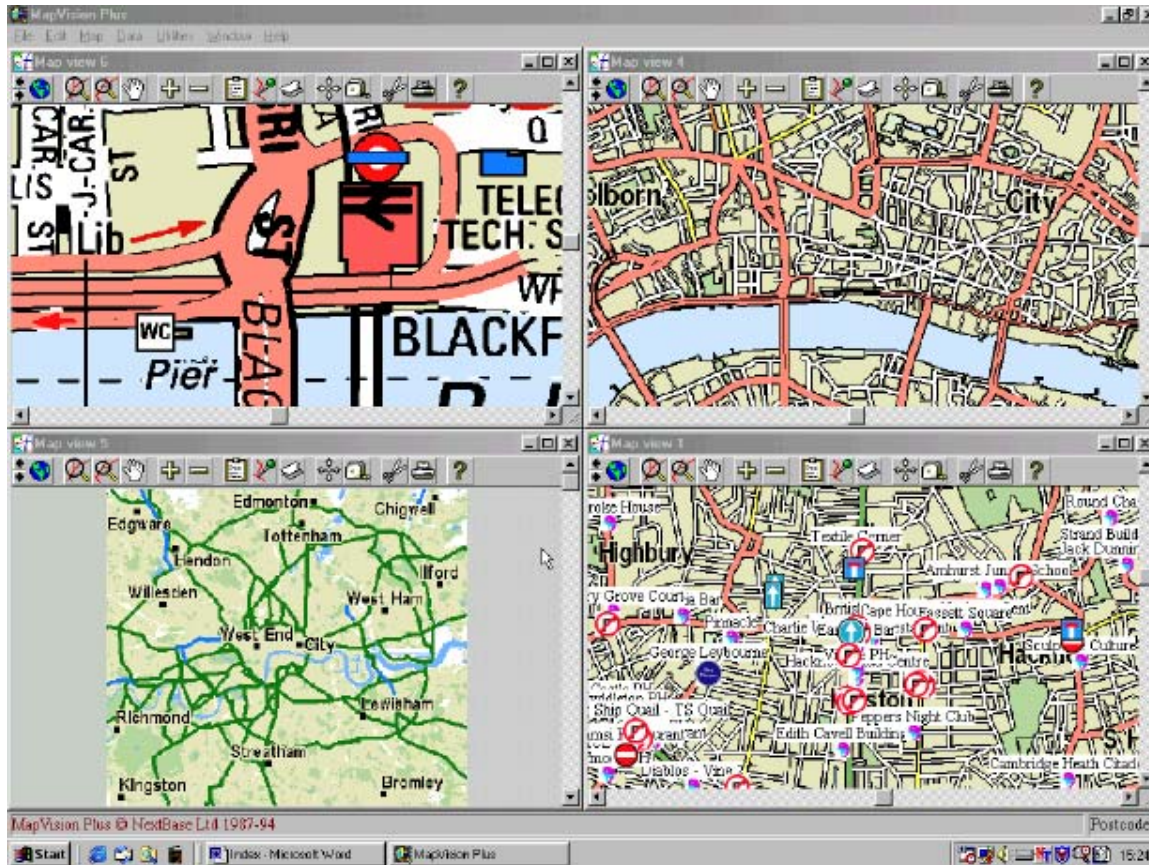


or even use the shortcut keystroke F6. Use whichever technique you prefer. To zoom out, click on the small magnifying glass icon,  select the command Zoom out from the Map menu, or use the shortcut keystroke F5.

Mapvision Plus and SMArt Points

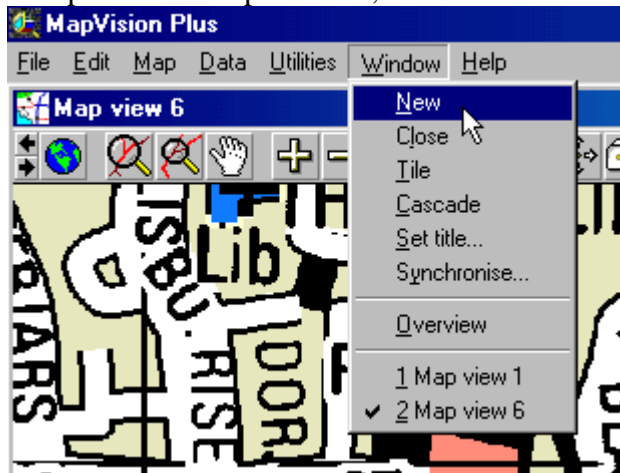
Working with Multiple Windows

You may wish to look at an area of the map in great detail while still keeping the whole country in view.



To cater for this, MapVision+ allows you to have up to four maps on screen at once, each of which can be worked on independently.

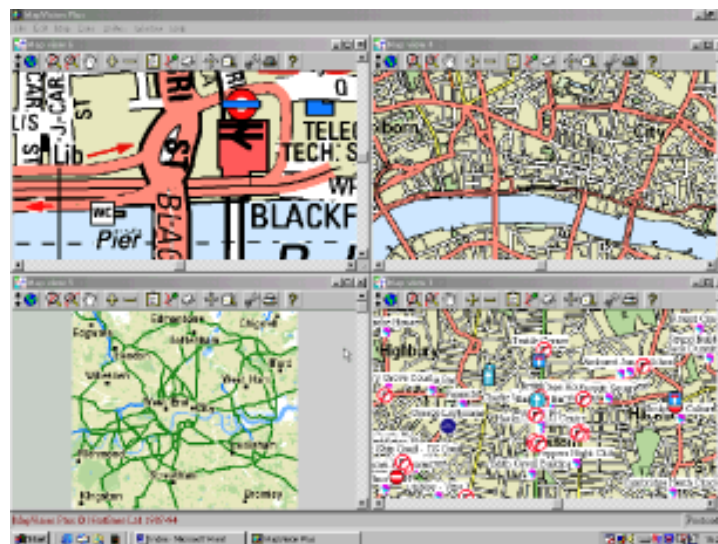
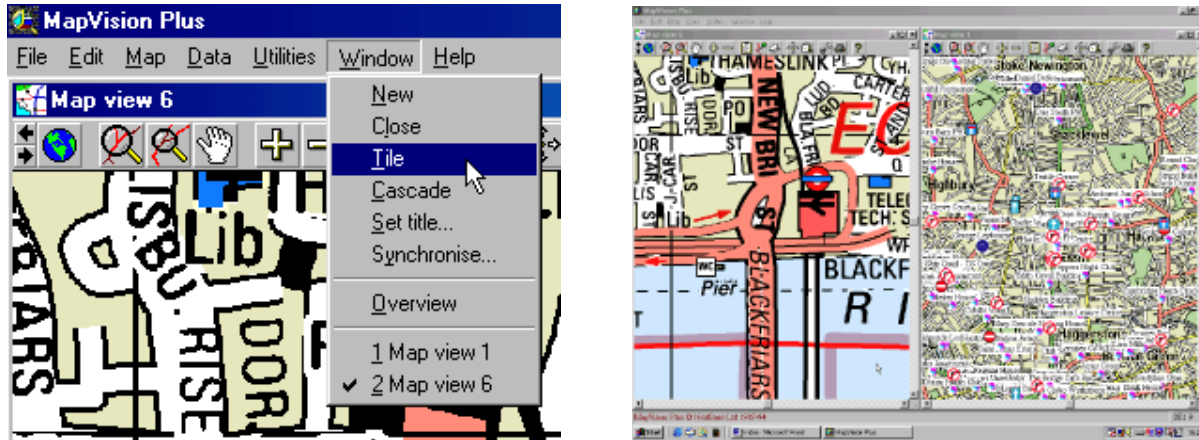
To open a new map window, use the New command from the Window menu.



Mapvision Plus and SMARt Points

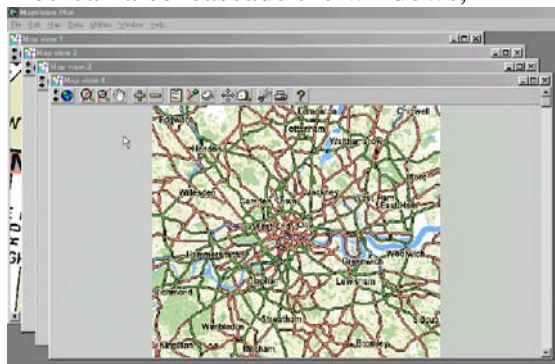
Tiling

For clarity of display, and for comparing the maps, you can put them side by side by using the command Tile from the Window menu. This divides the screen into 'tiles', with one map in each.



Cascading

You can also 'cascade the windows,

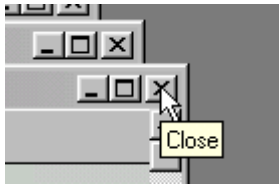


Which means arranging them so that the active one is on top, with the others ranged behind it with only their title bars showing! You can then click on the title bar of the window you want to see to bring it to the front. To cascade windows in this way, use the command Cascade from the Window menu.

The windows, which are open, are listed at the bottom of the Window menu, with a tick next to the currently active window. To switch to another window, click on the name of that window.

Mapvision Plus and SMART Points

Closing a Window



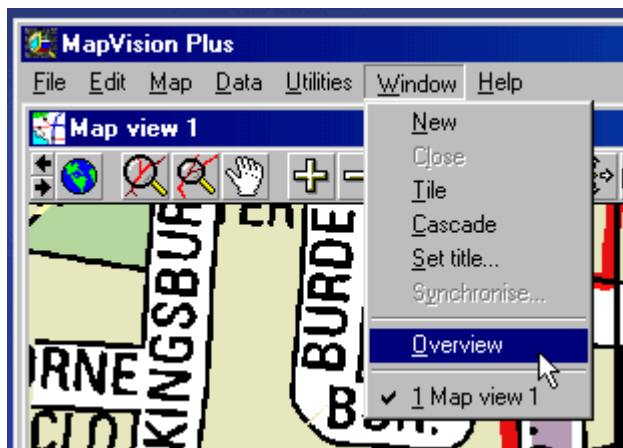
To close a window, click in it to make it the active window, and then select the command Close from the Window menu, or simply double-click on the Control-menu box at the top left-hand corner of the window.

Zooming with Multiple Windows

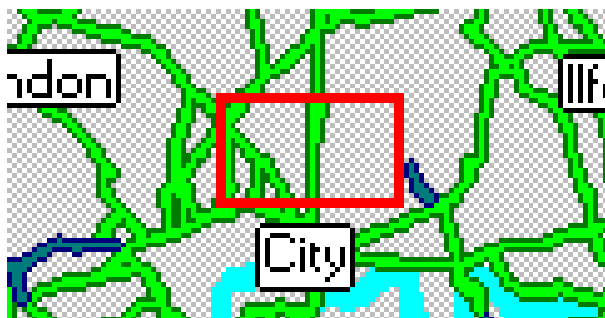
When you define a zoom box in one window you may notice that it also appears in all the other map windows. You can use this feature to good effect: on a zoomed out map, draw a zoom box and then click on the zoom in icon in one of the other windows. That window now shows the area you chose in the first window. Draw another zoom box and click in another window.

Using this feature you can very quickly establish a set of windows showing precisely the areas you require.

Overview Window



With the Overview window selected a map of Central London will appear.

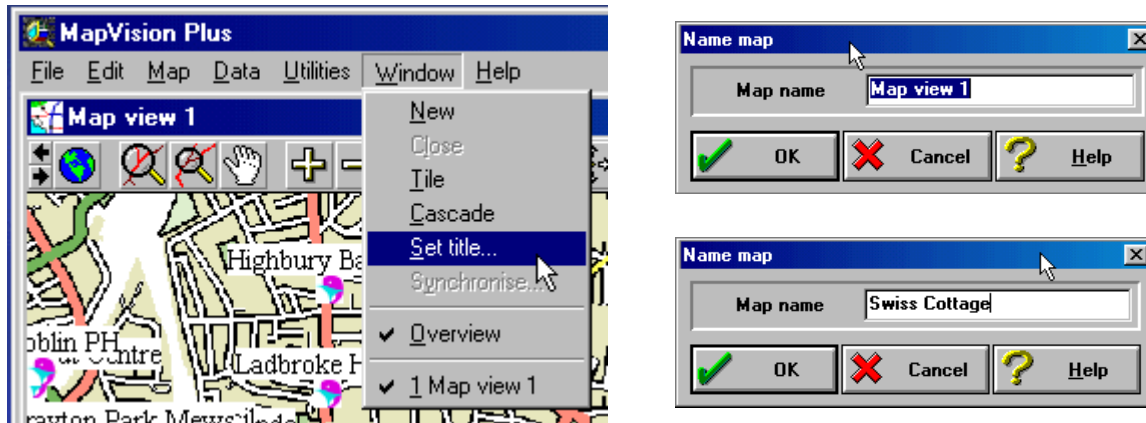


You can pick up the red square within this map and move to another location. This will quickly reposition your map view.

Mapvision Plus and SMart Points

Naming Maps

The windows you open will be given default names such as Map view 1, Map view 2 and so on. You can change these names to meet your own needs by using the command Set Title from the Window menu.



Remember that the active window is the one whose name will be changed!

The Active Window

Although you can have up to four map windows open at once, only one of them will be 'active' at any one time. Any commands, which affect only one map, will affect the active window, but not the other windows.

To activate a window, position the mouse arrow anywhere within it and click. You will be able to recognise an active window because it has a brighter title bar than an inactive window (provided you haven't changed your Windows colour scheme).

Rearranging map windows

When you open a new window, it will open on top of the original window, but there are other ways of viewing the windows.















Mapvision Plus and SMArt Points

Map toolbar



Across the top of each map window there is a toolbar. The toolbar is a feature, which is designed to save you time by assigning common actions to tools. When you click on a tool that action will be performed, without your having to open menus and select commands.

The following are the tools on the MapVision Plus for Windows toolbar:

-  **Overview** This tool is used to display the overview window.
-  **Zoom in** This tool is used to enlarge the scale of a map. The corresponding command is “Zoom in” from the Map menu.
-  **Zoom out** This tool is used to reduce the scale of the map on screen, i.e. to see a larger area of the map. The corresponding command is “Zoom out” from the Map menu.
-  **Pan map** This tool is used to move the map area currently being viewed in the active window.
-  **More detail** This tool is used to put more roads and places on the map. The corresponding command is “More detail” from the Map menu.
-  **Less detail** This tool is used to remove roads and places from the map. The corresponding command is “Less detail” from the Map menu.
-  **Map options** This tool is used to display the Map options dialog box, where you specify which features are to appear on the map.
-  **Databases** This tool is used to display a list of the databases, which are available with the map displayed on screen.
-  **Overlays** This tool is used to display a list of the overlays, which are available with the map displayed on screen. See the Overlays command.
-  **Go to place** This tool is used to position the cursor arrow at a specific point on the map. The corresponding command is “Go to place”.
-  **Distance line** This tool is used to measure the distance between two points on the map. The corresponding command is “Distance line”.
-  **Copy** This tool is used to cut the map to the clipboard, ready for pasting into a document. The corresponding command is “Copy”.
-  **Print** This tool is used to print the map.
-  **Point/shoot help** This tool enables MapVision's point-and-shoot help facility. The cursor changes shape and you can point at items on the screen to see what they are. You can click on a menu item or icon to go straight to the section of help text that describes it.

Hint: When you tile the windows you may find that the window is now too small to display all the icons on the toolbar. However, using the small scroll buttons at the left hand edge of the toolbar you can rotate the icons until you reach the ones you require.

Mapvision Plus and SMArt Points

Keyboard Shortcuts

Advanced users will like to use shortcut keys to increase the software's speed of use.

The following keyboard shortcuts are available:

An (M) indicates that this shortcut applies on map windows. Similarly, a (D) indicates that this shortcut applies on Database Editor windows.

<u>To</u>	<u>Press</u>	<u>Map/Database</u>
Name a place	F2	M
Show information on a database site	Shift+F2	M
Repeat last command	F4	M
Zoom out	F5	M
Zoom in	F6	M
Go to a place or database site	F7	M
Set which databases are displayed	F8	M
Set which overlays are displayed	F9	M
Start the distance line	D	M
Refresh (redraw) current map window	R	M
Clear names added to map	C	M
Move database site	M	M
Remove detail from the map	-	M
Add more detail to the map	+	M
Add a site to a database	INS	M
Delete a site from a database	DEL	M
Delete a record	DEL	D
Stop a redraw	Esc	M
Pan the map u	PgUp	M
Pan the map down	PgDn	M
Pan the map left	Ctrl+Left	M
Pan the map right	Ctrl+Right	M

Standard Windows Shortcuts:

<u>To</u>	<u>Press</u>
Get help	F1
Get point and shoot help	Shift+F1
Tile the windows	Shift+F4
Cascade the windows	Shift+F5
Copy the current window to clipboard	Ctrl+C or Shift+DEL